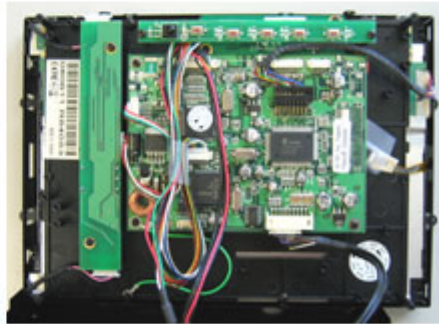




659.00 EUR  
incl. 19% VAT, plus [shipping](#)

- Open-Frame !
- Transflective !
- Sunlight Boosted !
- Auto Power On !



**Support:**  [Dimensions](#)

**New !** With special sunlight readable transflective TFT and high contrast (600:1) and Anti-Glare surface!

Using transflective panels and Anti-Glare touchscreens enables readability even under direct sunlight. For the first time with midrange-models, TFT panels with transflective technology are used. An anti-reflexion-coating additionally minimizes reflections on the surface. Transflective TFTs combine the advantages of reflexiv and transmissive display systems. The incoming light, which is making the surface of other display types to be unreadable, is reflected by the rear side of the panel. Because of this passive relexion the image is winning on brilliance. During dark light conditions the readability is still ensured by a transmissive backlight.

**Note :** This Open-Frame TFT display is an offer primarily meant for business and project customers. End consumers should only handle with unprotected electronic parts with appropriate experience.

**Possible additional options (starting from a MOQ of 20 units):**

- Speakers
- Auto-Dimmer
- Different cable lengths
- Other display models/sizes

- Touchscreen RS232 instead of USB
- Other connector types
- [...] Ask us !

**Additional informations :**

With the touchscreen functionality you easily can control your PC. The brilliant VGA-display ensures a maximum readability and sharpness.

AC-Adapter for home usage and a car cigarette lighter adapter are included.

The CTF-800ML can be used with any PC/MAC with VGA- and USB port.

Driver-CD included, compatible with :

- Windows 95/98/ME/NT4/2000/XP/7/8/8.1/10
- XP Tablet PC Edition
- Windows CE 2.12, 3.0, .net
- Linux RedHat,Mandrake,...
- Macintosh OS 9.x, 10.x
- DOS,...

| <b>Specifications</b> |   |
|-----------------------|---|
| Screen size           | 8.4" digital  |
| Aspect Ratio          | 4:3 wide TFT screen                                       |
| Dot Resolution        | 2400x600= 1,440,000 dots                                  |
| Physical Resolution   | 800x600   |
| Supported Resolutions | 640x480-1600x1024   |
| Color configuration   | RGB stripe  |
| Brightness            | 450 nits  |
| Contrast              | 600:1   |
| Operating temperature | -30°C to 85°C   |
| Power input           | DC 9-30V  |
| Power consumption     | max. 10W  |
| Video system          | 2x Video inputs (PAL/NTSC)<br>1x VGA input                |
| Dimensions            | 205 x 145 x 35 mm<br>Display : 170 x 130 mm               |
| Video input signal    | 1.0Vp-p, composite video                                  |
| Features              | Full function OSD control (englisch)<br>Auto Power On/Off |
| What is included ?    | - 8.4" VGA Open-Frame Touchscreen TFT with Video-support  |
|                       | - Power Adapter f. EU 230V                                |
|                       | - Cigarette Lighter Adapter                               |
|                       | - Touchscreen Driver-CD                                   |
|                       | - Manual  |